



*jordan fishwick*

4 Pownall Court, SK9 5QE  
Guide Price £234,950



## Pownall Court Wilmslow SK9 5QE

Guide Price £234,950



A credit to its current owner, this one double bedroom ground floor apartment has been renovated and improved to exacting standards. This charming apartment is presented beautifully throughout with LED spotlights, uPVC double glazed windows, re-fitted contemporary kitchen with appliances, a re-fitted shower room and bedroom with fitted wardrobes. There is also a spacious bay-fronted lounge with a door leading to the outside patio area. It is situated within the ever popular Pownall Court, and enjoys the sought after 'Kings Road' location within the development. Wilmslow town centre is only a short distance away, and the local commuter links are just around the corner. Pownall Court is set within its own communal manicured grounds, with residents off road parking. This property also comes with a large tandem garage. Internal viewing is highly recommended.

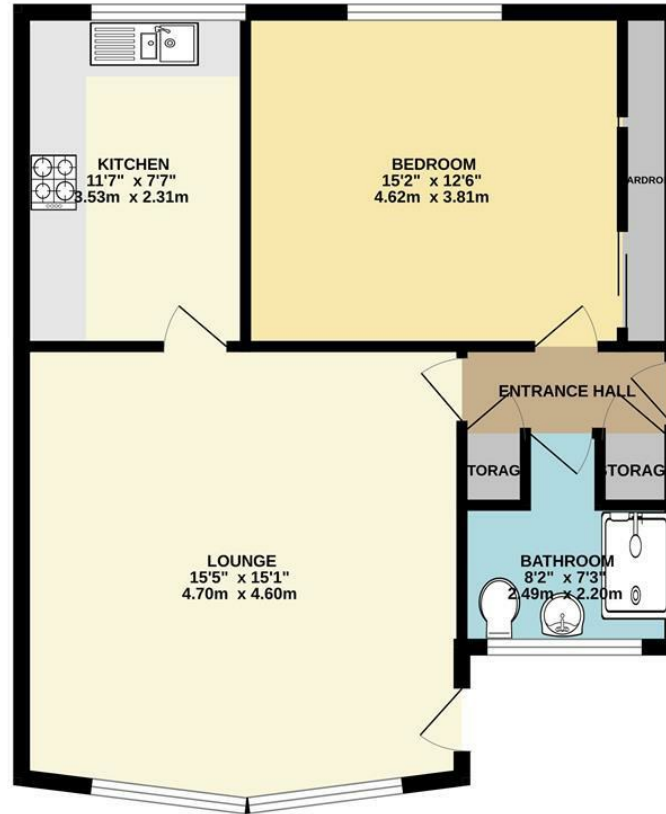


- Tandem Garage
- Residents Parking
- Popular Development
- Close Proximity To Wilmslow Town Centre



Energy Efficiency Rating		
	Current	Potential
Very energy efficient - lower running costs		
(92 plus) <b>A</b>		
(81-91) <b>B</b>		
(69-80) <b>C</b>		<b>79</b>
(55-68) <b>D</b>		
(39-54) <b>E</b>	<b>53</b>	
(21-38) <b>F</b>		
(1-20) <b>G</b>		
Not energy efficient - higher running costs		
<b>England &amp; Wales</b>	EU Directive 2002/91/EC	

GROUND FLOOR



Measurements are approximate. Not to scale. Illustrative purposes only.  
Made with Metropix ©2025



These particulars are believed to be accurate but they are not guaranteed and do not form a contract. Neither Jordan Fishwick nor the vendor or lessor accept any responsibility in respect of these particulars, which are not intended to be statements or representations of fact and any intending purchaser or lessee must satisfy himself by inspection or otherwise as to the correctness of each of the statements contained in these particulars. Any floorplans on this brochure are for illustrative purposes only and are not necessarily to scale.

Offices at: Chorlton, Didsbury, Disley, Hale, Glossop, Macclesfield, Manchester Deansgate, Manchester Whitworth Street, New Mills, Sale, Wilmslow and Withington

36-38 Alderley Road, Wilmslow SK91JX  
**01625 532000**

wilmslow@jordanfishwick.co.uk  
www.jordanfishwick.co.uk